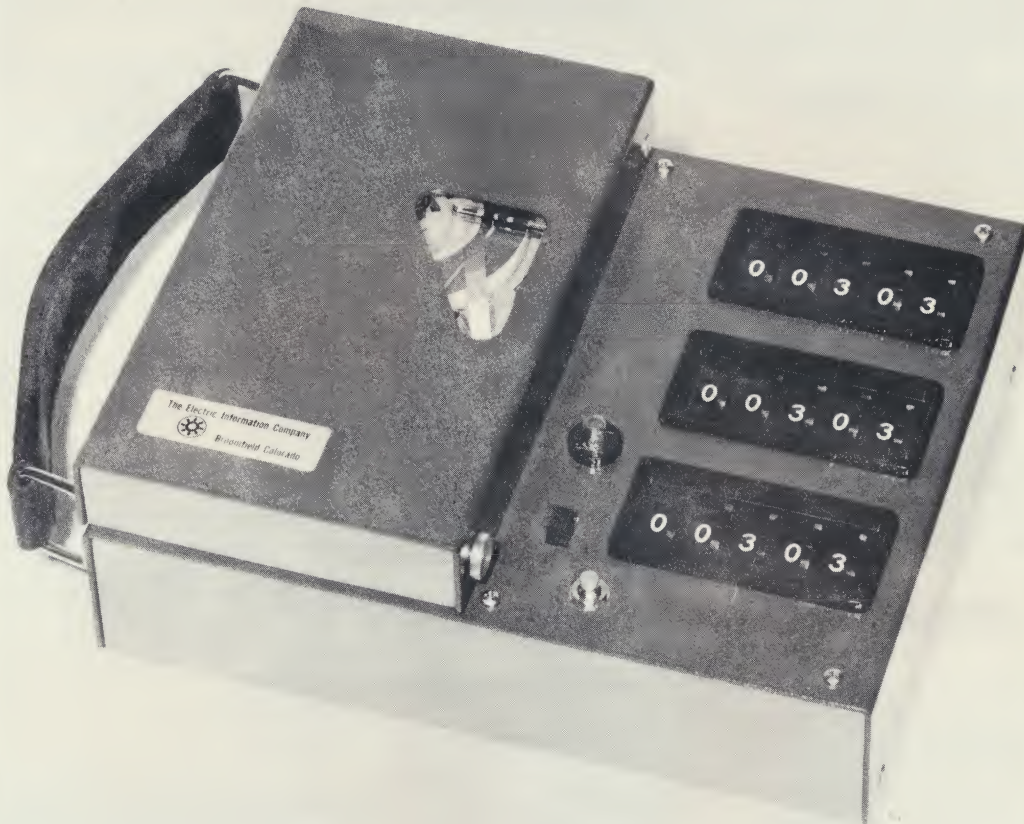


## SPECIFICATION

## HAND RECORDER MODEL 303



- Hand-Operated, Portable, Magnetic Tape Digital Recorder
- ... "Closes the Computer Gap" by eliminating the need for punched cards, mark-sense cards, and paper tape for data acquisition and processing.
- ... Tape in cartridges for convenient loading; protects integrity of data.
- ... Rechargeable permanent batteries for portable, reliable power.
- ... Fail-safe error checking circuitry.

**The Electric Information Company,** 309 East Main, Riverton, Wyoming 82501

## SPECIFICATIONS

### HAND RECORDER

- Serially records 15-decimal digits per block.
- Tape speed—2.75 inches per second.
- Tape length per 15-digit block—1.0 inches.
- Inter-record gap—1.5 inches.
- Recording time—.9 seconds.
- Switches—positive detent, 15 position, rotary, thumb activated.
- Weight (without cartridge)—4.75 lbs.
- Size—7¼" x 8½" x 3"
- Error light—replaceable Sylvania-type B0450.
- Rechargeable, permanent, nickel-cadmium batteries—4000 recorded information blocks per charge.
- Minimum time for complete recharge—17 hours.
- Batteries cannot be overcharged.
- Special colors available upon request.

### TAPE CARTRIDGES

- Reusable ¼-inch magnetic tape in continuous loop cartridges.
- Tape threading not required. Tape is not removed from cartridges.

● Tape cartridges available:	Weight (oz.)	Tape Lengths (feet)	Minimum number of recorded blocks of information per tape
	4	25	110
	4	44	193
	4	63	277
	4	132	581
	5	207	911
	8	394	1733

### OPERATING ENVIRONMENT

- Temperature range—operating: 0°F-120°F; non-operating: — 20°F-160°F.
- Humidity—0-95%, Standard Model; 0-100%, All-Weather Model.

**The Electric Information Company,** 309 East Main, Riverton, Wyoming 82501

## OPERATION

- Insert pinch roller into cartridge (below).
- Insert cartridge into recorder (below).
- Set data switches according to the coding required for the application.
- Depress "Record" button momentarily.
- Information is then recorded and tape is positioned for next entry.
- If error light remains lighted, re-record information.
- Set data switches for next entry and record.
- When tape leader re-appears in window (see cover picture), remove cartridge for processing, insert a new cartridge, and continue recording.
- Recharge batteries after 4000 blocks of information have been recorded or every 21 days, whichever occurs first.
- Information recorded on tape cartridges is read directly into any computer system in less than 1.75 minutes by the Electric Information Co. **Input Units**, eliminating the need for punched cards and/or paper tape.



*Pinch roller being inserted  
into magnetic tape cartridge.*



*Magnetic tape cartridge being inserted  
into Hand Recorder.*

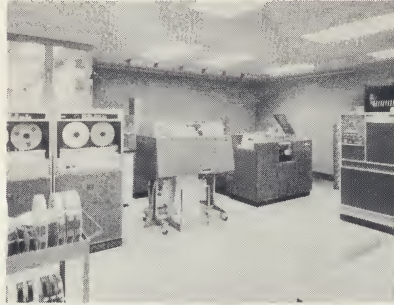
**The Electric Information Company,** 309 East Main, Riverton, Wyoming 82501

## Typical Applications

### ● MEDICAL ACCOUNTING



*Patient account number, date, type service, type transaction, and dollar amount is recorded.*



*Information is processed through Computer.*

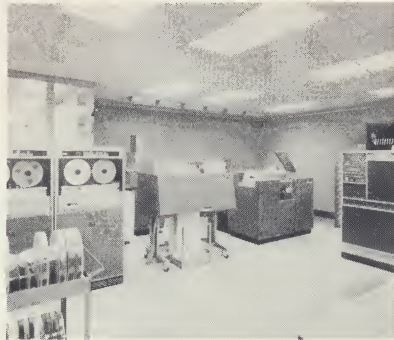


*Statements, aged listing, and statement stubs printed out. Stubs retained in office as record of patient transactions.*

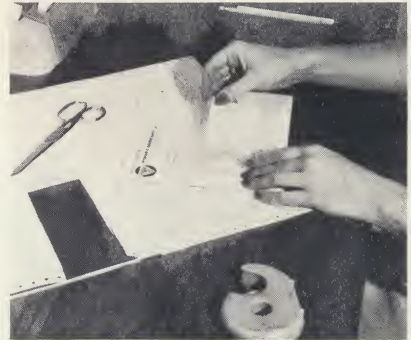
### ● INVENTORY CONTROL



*Bin number, clerk number, type transaction, quantity, and reference number is recorded.*



*Information is processed through Computer.*

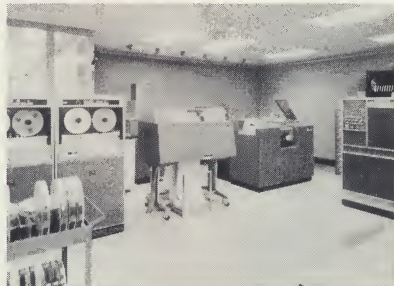


*Weekly and monthly inventory reports printed out for management and administrative use.*

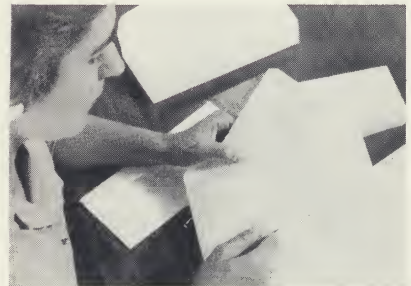
### ● UTILITY METER READING (Single or Dual Utility)



*Account or meter number and meter reading being recorded.*



*Information is processed through Computer.*



*Statements for utility customers, aged account list, and management reports provided.*

### ● OTHER APPLICATIONS

Any delivery route—such as a milk route. • Super market inventory and re-order control.

Recording pharmacy customer data for income tax purposes.

Any data-gathering requirement for computer processing.

### ● ACCESSORIES

Hand recorders can be furnished with provisions that will allow operation with or without digital clock input, employee time clock input, and other digital inputs. When attached, these units substitute for a comparable number of data switches.